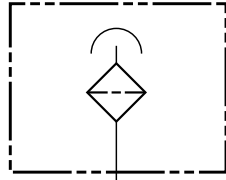


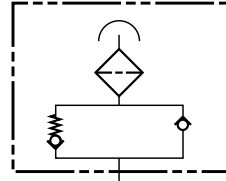
## ELF...3 & ELF...4 Series Filler Breathers



### Hydraulic Symbols



standard



with relief valve (ELF3 only)

### Specifications

- Maximum flow rate - 31 scfm / 230 gpm at 0.04 bar
- Epoxy coated steel cap
- Zinc-plated internals
- 3 or 10 micron
- 500 micron plastic filler basket
- Bayonet connection to access fill port
- Installs via 3 or 6 bolt circle (*bolts included*)
- Locking tabs (*optional - ELFL 3 only*)
- Pressurized breather with relief valve (*optional - ELF3 only*)
- Phenolic resin impregnated filter element

### Model Code

**ELF P 3 F 10 W 1 . 0 /**

**Filter Type**  
 ELF = Filler Breather  
 ELFL = Lockable Filler Breather (not available for size 4)

**Filter Element Material**  
 P = Phenolic Resin Impregnated Paper

**Size**  
 3 = 31 scfm (230 gpm) max.  
 4 = 12 scfm (90 gpm) max.

**Type of Connection**  
 F = Flanged

**Filtration Rating (micron)**  
 3 = 3µm Air Filtration  
 10 = 10µm Air Filtration

**Gauge Options**  
 W = Without Indicator

**Type**  
 1 = ELF 3 and 4  
 4 = ELF 3 RV; Reseat Pressure 6 psi (0.4 bar)  
 5 = ELF 3 RV; Reseat Pressure 10 psi (0.7 bar)  
 6 = ELF 3 RV; Reseat Pressure 3 psi (0.2 bar)

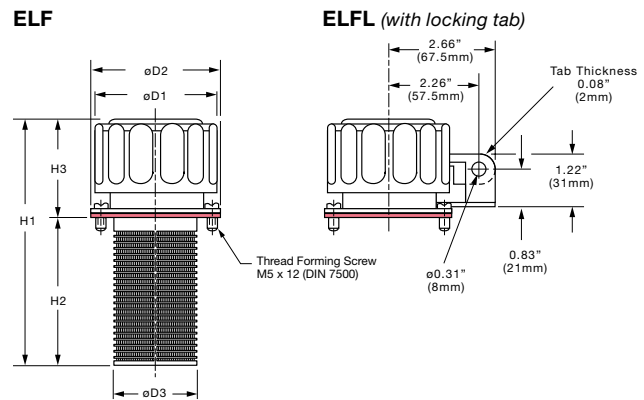
**Modification Number**  
 .0 = Standard

**Supplementary Details**  
 RV = Relief Valve (for use on Pressurized Tanks; ELFP3 only)  
 SO169H3.5 = 3.5 inch plated steel filler basket  
 SO169H6 = 6 inch plated steel filler basket  
 SO169H8 = 8 inch plated steel filler basket (ELFP3 only)

Model Codes containing selections listed in RED are non-standard items - Minimum quantities will apply  
 Contact HYDAC for information and availability

Not all combinations are available

### Dimensions

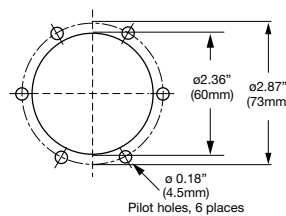


Size	ø D1	ø D2	ø D3	H1	H2	H3
ELF 3	2.99" (76mm)	3.27" (83mm)	2.05" (52mm)	6.26" (159mm)	3.80" (96.5mm)	2.46" (62.5mm)
ELF 4	1.73" (44mm)	1.97" (50mm)	1.10" (28mm)	5.32" (135mm)	3.21" (81.5mm)	2.11" (53.5mm)

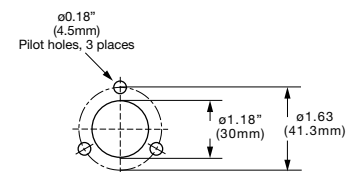
### Mounting Hole Patterns

#### ELF 3

(flange interface to DIN 24557/T2)

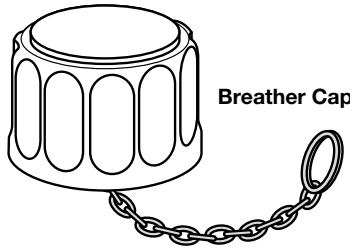


#### ELF4



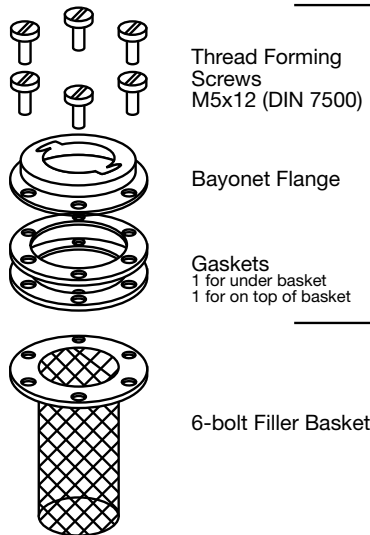
## ELF 3 Series Filler Breather Parts

### ELF 3 Breather Caps



Part	Model Code	Part No.
Breather Cap	ELF P 3 CAP 10 W 1.0 W/CHAIN	02080124
Breather Cap with 3 psi relief valve	ELF P 3 CAP 10 W 6.0/RV W/CHAIN	02080125

### 6 bolt Bayonet Flange



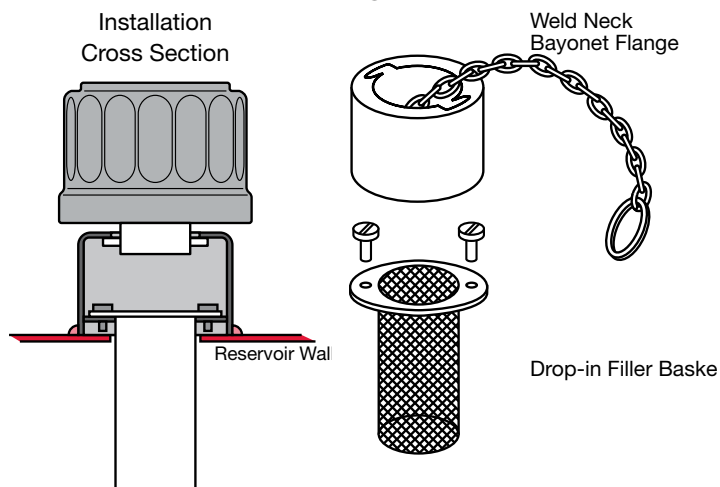
Bayonet Flange Kit

Part	Model Code	Part No.
Bayonet Flange Kit	ELF3 BAYONET FLANGE KIT ASSY	00002680

Note: Parts not sold separately

Part	Model Code	Part No.
3.5" Steel Filler Basket	ELF3 STRAINER BASKET 3.5" PLATED STEEL	02701474
6" Steel Filler Basket	ELF3 STRAINER BASKET 6" PLATED STEEL	02701475
8" Steel Filler Basket	ELF3 STRAINER BASKET 8" PLATED STEEL	02701441
4" Plastic Filler Basket	ELF3 STRAINER BASKET 4" PLASTIC	01202916

### Weld Neck Bayonet Flange

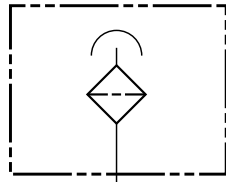


Part	Model Code	Part No.
Weld Neck	ELF3 WELD NECK W/CHAIN	02080126
Drop-in Strainer	ELF3 WELD NECK STRAINER	02078939

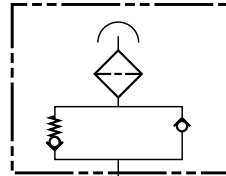
## ELF...10 Series Filler Breathers



### Hydraulic Symbols



standard



with relief valve

### Specifications

- Maximum Flow Rate - 13 scfm / 100 gpm at 0.04 bar
- Durable synthetic material (PA6)
- Filtration rating 3  $\mu$ m
- Buna N O-Ring
- Threaded connection to access fill port
- Optional dipstick (*contact factory*)
- Optional customer logo (*contact factory*)
- Optional pressurized breather with relief valve
- Optional anti-splash device
- -22° to 212°F (-30° to 100°C)
- Phenolic resin impregnated filter element

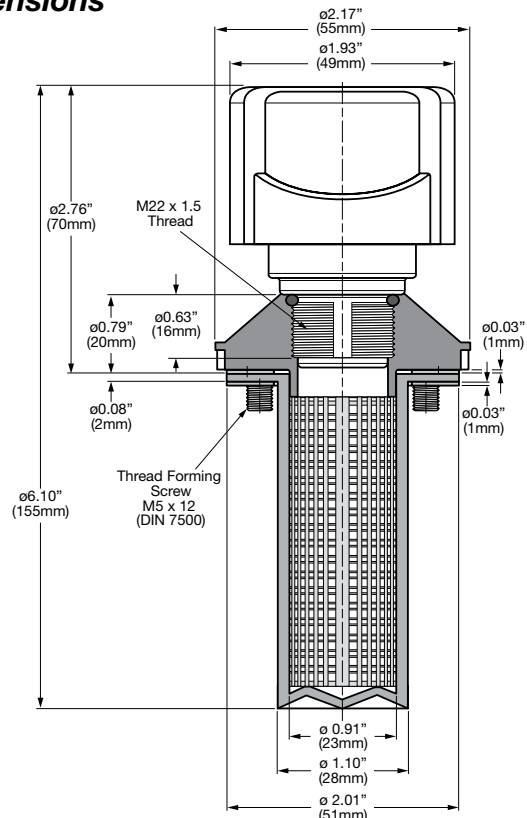
### Model Code

	<b>ELF</b>	<b>P</b>	<b>10</b>	<b>F</b>	<b>3</b>	<b>W</b>	<b>1.0</b>	<b>/ -</b>	<b>RV0.4</b>
<b>Filter Type</b>	= Filler Breather								
<b>Filter Element Material</b>	= Phenolic Resin Impregnated Paper								
<b>Size</b>	10								
<b>Connection</b>	= Flanged connection								
<b>Filtration Rating (micron)</b>	3 = 3 $\mu$ m air filtration								
<b>Gauge Option</b>	W = without indicator								
<b>Type</b>	1 = Flanged connection (see dimensions above)								
<b>Modification Number</b>	.0 = Standard								
<b>Options</b>	(omit) = Standard RV0.2 = Relief Pressure, 3 psi (0.2 bar) RV0.4 = Relief Pressure, 6 psi (0.4 bar) RV0.7 = Relief Pressure, 10 psi (0.7 bar) AS = Anti-splash protection ( <i>only for version without RV</i> )								

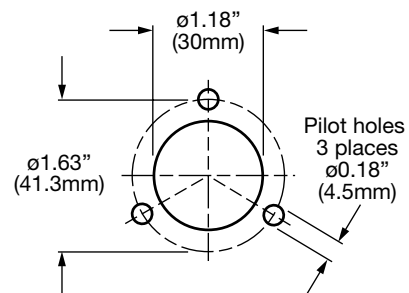
Model Codes containing selections listed in RED are non-standard items - Minimum quantities will apply  
Contact HYDAC for information and availability

Not all combinations are available

### Dimensions



### Mounting Hole Pattern



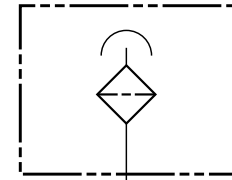
### Replacement Cap Only (with M22x1.5 thread)

Model	Part No.
BF P 10 M 3 W 1.0	01284377
BF P 10 M 3 W 1.0 /-AS	01284378
BF P 10 M 3 W 1.0 /-RV0.2	01284379
BF P 10 M 3 W 1.0 /-RV0.4	01284380
BF P 10 M 3 W 1.0 /-RV0.7	01284381

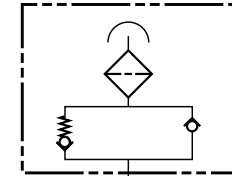
## ELF...30 Series Filler Breathers



### Hydraulic Symbols



standard

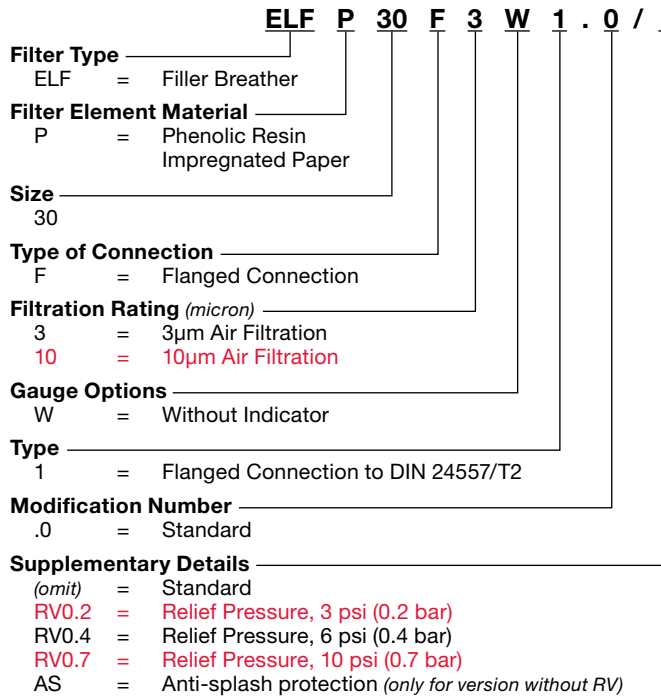


with relief valve

### Specifications

- Maximum flow rate - 31 scfm / 230 gpm at 0.04 bar
- Durable synthetic material (PA6)
- 3 or 10 micron
- Buna N O-Ring
- Threaded connection to access fill port
- Installs via 6-bolt circle (*bolts included*)
- Optional dipstick (*contact factory*)
- Optional customer logo (*contact factory*)
- Optional pressurized breather with relief valve
- Optional anti-splash device
- -22° to 212°F (-30° to 100°C)
- Phenolic resin impregnated filter element

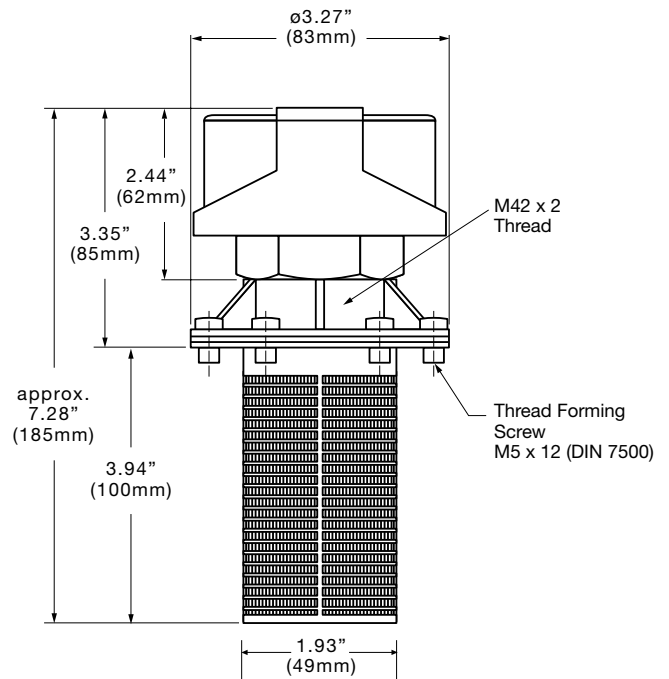
### Model Code



*Model Codes containing selections listed in RED are non-standard items – Minimum quantities will apply  
Contact HYDAC for information and availability*

*Not all combinations are available*

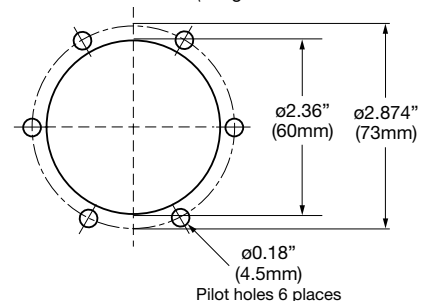
### Dimensions



### Replacement Cap Only (with M42x2 thread)

Model	Part No.
BF P 30 M 3 W 1.0	01286298
BF P 30 M 3 W 1.0 /-AS	03246445
BF P 30 M 3 W 1.0 /-RV0.2	01291009
BF P 30 M 3 W 1.0 /-RV0.4	01290498
BF P 30 M 3 W 1.0 /-RV0.7	01294026

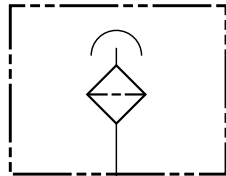
### Mounting Hole Pattern (flange interface to DIN 24557/T2)



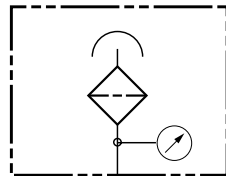
## ELF...7 Series Filler Breathers



### Hydraulic Symbols



without indicator

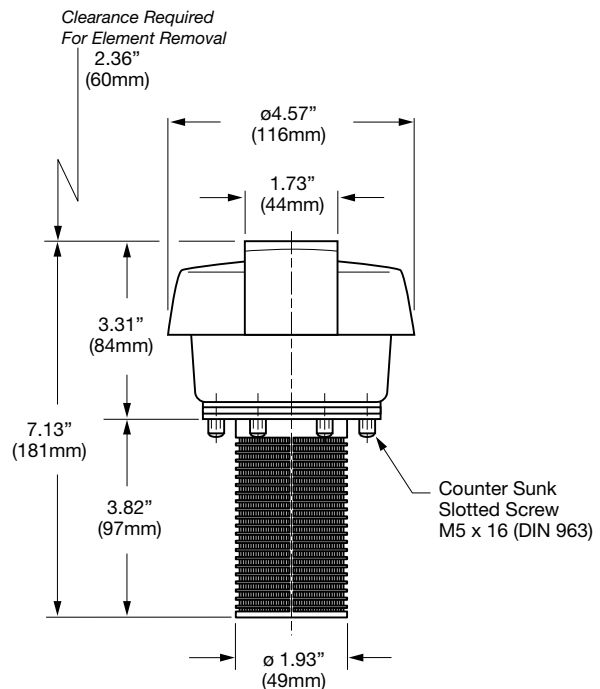
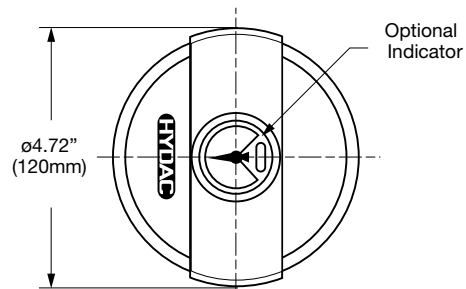


with indicator

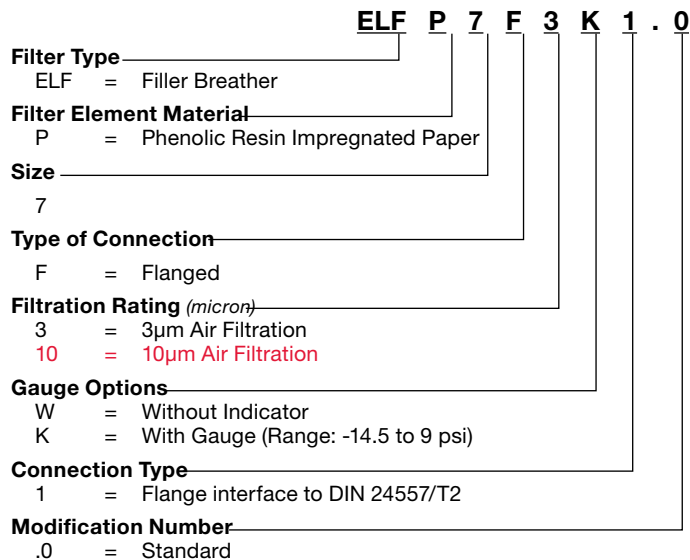
### Specifications

- Maximum flow rate - 63 scfm / 475 gpm at 0.04 bar
- Durable synthetic material (PA6)
- 3 or 10 micron
- 500 micron plastic filler basket
- Replaceable element Phenolic resin impregnated paper
- Removable lid to access fill port
- Installs via 6-bolt circle (*bolts included*)
- Differential gauge (*optional*)
- -22° to 212°F (-30° to 100°C)

### Dimensions



### Model Code



*Model Codes containing selections listed in RED are non-standard items – Minimum quantities will apply  
Contact HYDAC for information and availability  
Not all combinations are available*

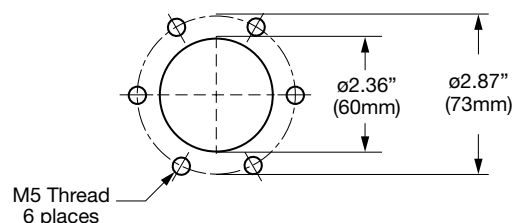
### Replacement Elements



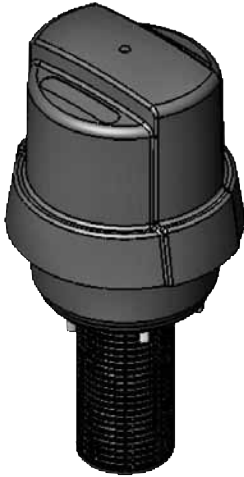
Micron	Model Code	Part No.
3	0007L003P	00310948
10	0007L010P	00310485

### Mounting Hole Pattern

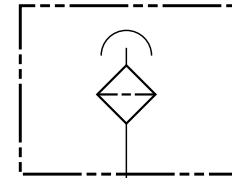
(flange interface to DIN 24557/T2)



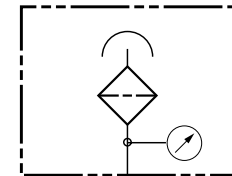
## ELF...72 Series Filler Breathers



### Hydraulic Symbols



without indicator

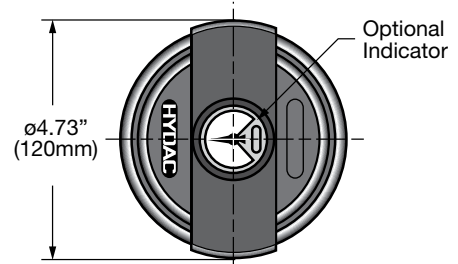


with indicator

### Specifications

- Maximum flow rate - 74 scfm / 555 gpm at 0.04 bar
- Durable synthetic material (PA6)
- 3 or 10 micron
- 500 micron plastic filler basket
- Replaceable element
- Phenolic resin impregnated paper
- Removable lid to access fill port
- Installs via 6-bolt circle (bolts included)
- Differential gauge (optional)
- -22° to 212°F (-30° to 100°C)

### Dimensions



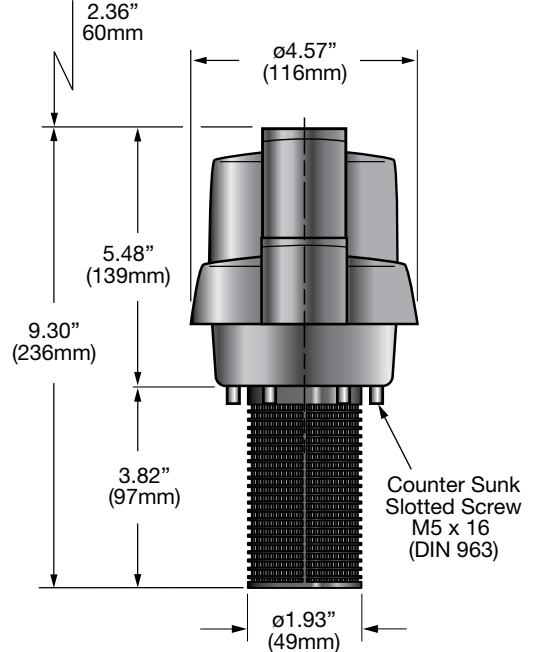
### Model Code

	<b>ELF</b>	<b>P</b>	<b>72</b>	<b>F</b>	<b>3</b>	<b>W</b>	<b>1.0</b>
<b>Filter Type</b>	_____						
ELF = Filler Breather							
<b>Filter Element Material</b>	_____						
P = Phenolic Resin Impregnated Paper							
<b>Size</b>	_____						
72							
<b>Type of Connection</b>	_____						
F = Flanged							
<b>Filtration Rating (micron)</b>	_____						
3 = 3µm Air Filtration							
10 = 10µm Air Filtration							
<b>Gauge Options</b>	_____						
W = Without Indicator							
K = With Gauge (Range: -14.5 to 9 psi)							
<b>Connection Type</b>	_____						
1 = Flange interface to DIN 24557/T2							
<b>Modification Number</b>	_____						
.0 = Standard							

Model Codes containing selections listed in RED are non-standard items – Minimum quantities will apply  
Contact HYDAC for information and availability

Not all combinations are available

Clearance Required for Element Removal



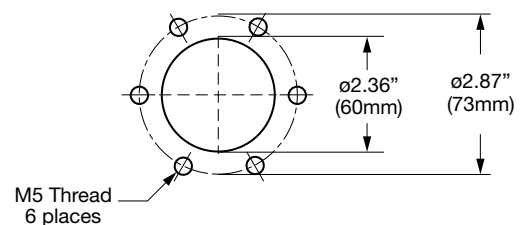
### Replacement Elements



Micron	Model Code	Part No.
3	0072L003P	03269023
10	0072L010P	03190037

### Mounting Hole Pattern

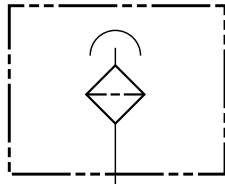
(flange interface to DIN 24557/T2)



## ELF...5 Series Filler Breathers



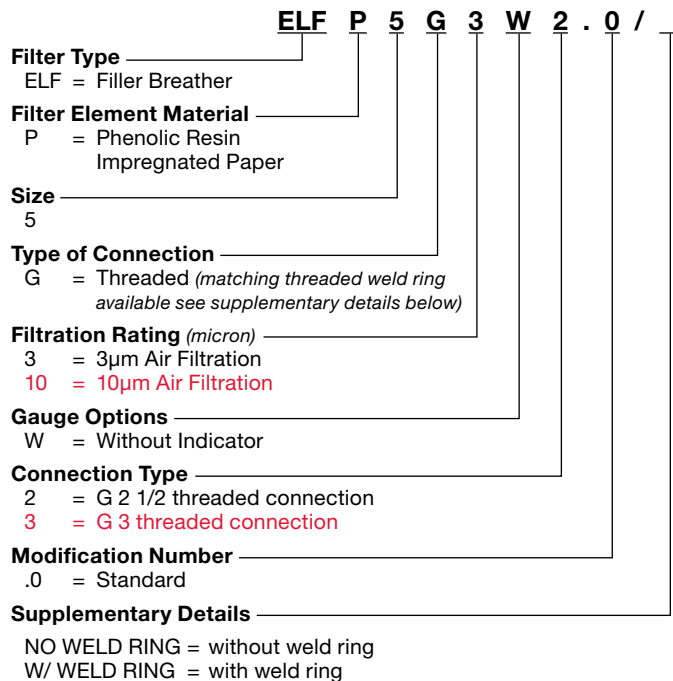
### Hydraulic Symbols



### Specifications

- Maximum flow rate - 105 scfm / 790 gpm at 0.01 bar
- Steel element housing
- 240 mm Zinc-plated metal filler basket
- 3 or 10 micron
- Replaceable element
- Removable Lid to access fill port
- Installs via threaded connection (*weld ring optional*)
- Phenolic resin impregnated filter element

### Model Code



*Model Codes containing selections listed in RED are non-standard items – Minimum quantities will apply  
Contact HYDAC for information and availability*

*Not all combinations are available*

### Replacement Elements



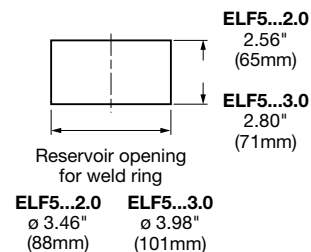
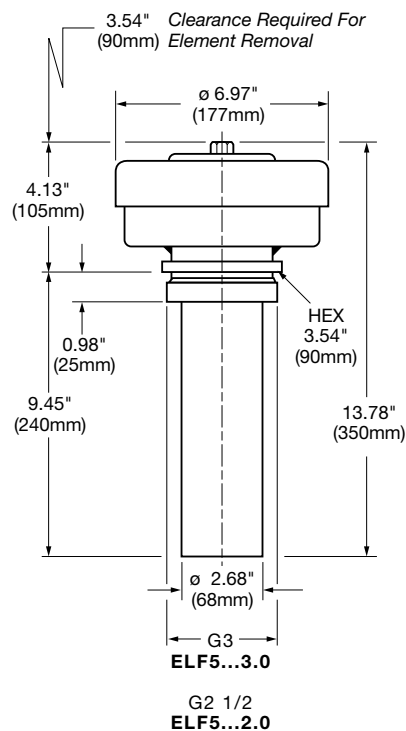
Micron	Model Code	Part No.	Qty Req.
3	0005L003P	00309450	1
10	0005L010P	00306097	1

### Weld Rings



Size	Model Code	Part No.
G 2 1/2	RING WELD ELF 5 G 2 1/2	02065053
G 3	RING WELD ELF 5 G 3	02065054

### Dimensions

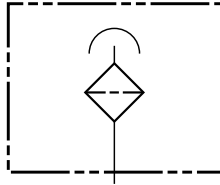


Dimensions are for general information only, all critical dimensions should be verified by requesting a certified print.  
Dimensions are in inches/(mm)

## ELF...52 Series Filler Breathers



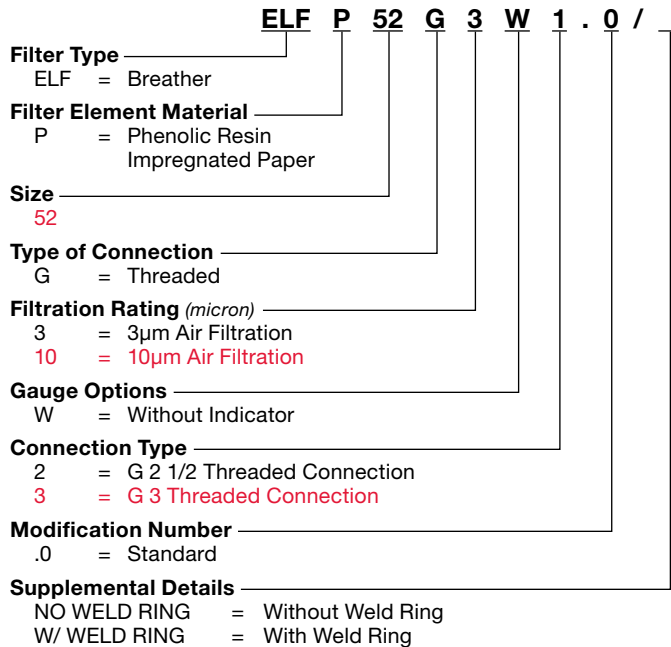
### Hydraulic Symbols



### Specifications

- Maximum flow rate - 176 scfm / 1320 gpm at 0.01 bar
- Steel housing
- 3 or 10 micron
- Replaceable element  
*(uses 2 of the standard size 5 elements)*
- Phenolic resin impregnated paper
- Installs via threaded connection  
*(weld ring optional)*

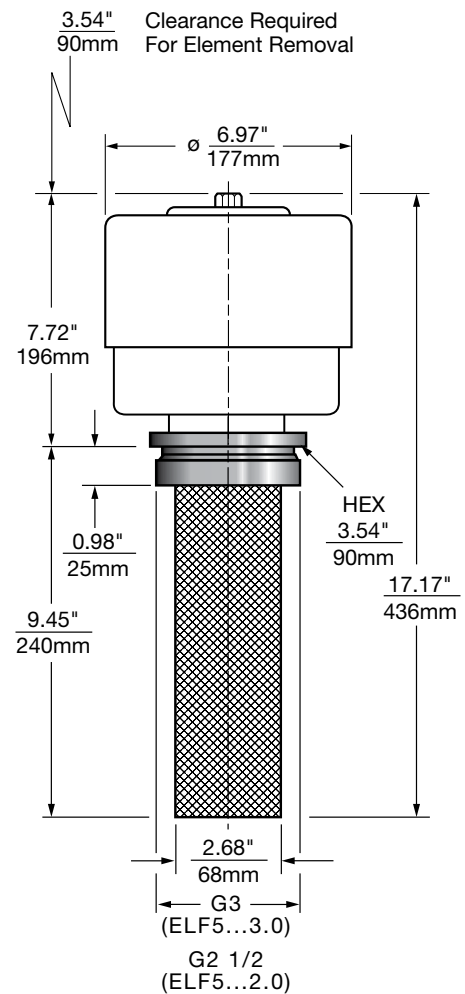
### Model Code



*Model Codes containing selections listed in RED are non-standard items – Minimum quantities will apply  
Contact HYDAC for information and availability*

*Not all combinations are available*

### Dimensions



### Replacement Elements



Micron	Model Code	Part No.	Qty Req.
3	0005L003P	00309450	2
10	0005L010P	00306097	2

### Weld Rings



Size	Model Code	Part No.
G 2 1/2	RING WELD ELF 5 G 2 1/2	02065053
G 3	RING WELD ELF 5 G 3	02065054

Dimensions are for general information only, all critical dimensions should be verified by requesting a certified print.  
Dimensions are in inches/(mm)