

## Split Flanges SAE Code 61 & 62



front view of one flange pair



rear view of one flange pair

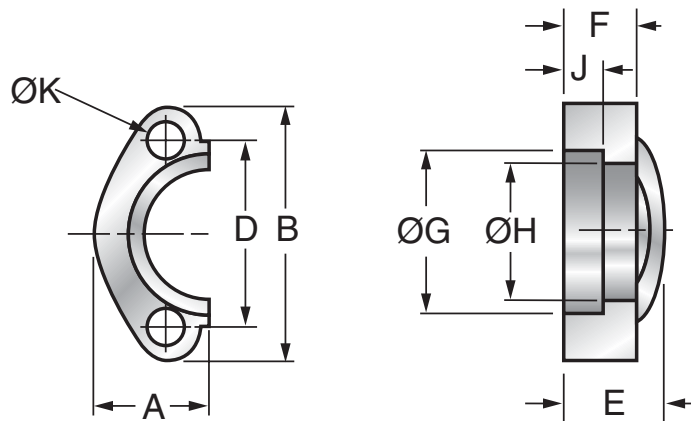
### Materials

Plated Carbon Steel  
Stainless Steel

### Specifications

**Pressure Rating:**  
Code 61: 3000 psi  
Code 62: 5000 psi

### Dimensions:



### Code 61 Split Flanges (sold in pairs - each pair makes a single connection)

Size	Part Number (Carbon Steel)	Part Number (Stainless Steel)	A	B	D	E	F	ØG	ØH	J	ØK
0.50	<i>02701585</i>	<i>02701539</i>	0.86	2.12	1.50	0.75	0.50	1.22	0.96	0.245	0.344
0.75	<i>02055588</i>	<i>02701540</i>	0.98	2.56	1.88	0.88	0.56	1.53	1.27	0.245	0.406
1.00	02055704	02700970	1.11	2.75	2.06	0.94	0.62	1.78	1.52	0.295	0.406
1.25	02055715	<i>02701541</i>	1.39	3.12	2.31	0.88	0.56	2.03	1.72	0.295	0.469
1.50	02055720	<i>02700919</i>	1.58	3.69	2.75	1.00	0.62	2.41	2.00	0.295	0.531
2.00	02055735	<i>02701542</i>	1.86	4.00	3.06	1.03	0.62	2.84	2.47	0.355	0.531

### Code 62 Split Flanges (sold in pairs - each pair makes a single connection)

Size	Part Number (Carbon Steel)	Part Number (Stainless Steel)	A	B	D	E	F	ØG	ØH	J	ØK
0.50	<i>02701585</i>	<i>02701537</i>	0.89	2.22	1.59	0.88	0.62	1.28	0.97	0.285	0.344
0.75	02055882	<i>02700540</i>	1.14	2.81	2.00	1.12	0.75	1.66	1.28	0.325	0.406
1.00	<i>02055883</i>	02700916	1.33	3.19	2.25	1.31	0.94	1.91	1.53	0.355	0.469
1.25	02055889	<i>02701538</i>	1.48	3.75	2.63	1.50	1.06	2.16	1.75	0.385	0.531
1.50	02055890	02700544	1.83	4.44	3.13	1.69	1.19	2.53	2.03	0.475	0.656
2.00	02055891	02700847	2.20	5.25	3.81	2.06	1.44	3.16	2.66	0.475	0.781

Dimensions are for general information only, all critical dimensions should be verified by requesting a certified print.  
Dimensions are in inches.

*Part numbers listed in red italics are non-standard items – Minimum quantities may apply – Contact HYDAC for information and availability*