

## HROS Series Oval Clamps



### Description

Oval clamps are ideal for mobile applications where space is limited. One-piece, hinged polypropylene clamp body.

### Features

- Low Profile Design
- Easy installation

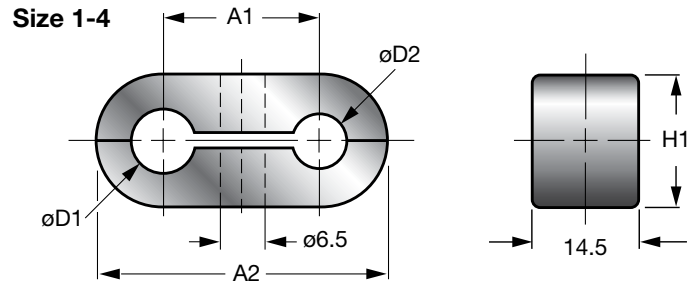
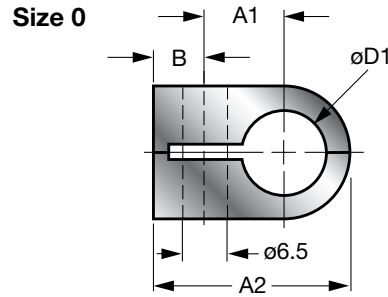
### Materials

- PP - Polypropylene (standard)
- PA or others may be available

### Temp Specifications

-22° to 194°F (-30° to 90°C)

### Dimensions



Model Code	Part No.	Size	Tube Size	Pipe Size	A1	A2	B	$\phi D1^*$ & $\phi D2^*$	$\phi D1^*$ & $\phi D2^*$	H1
<i>HROS 0a KP 6.0 PP</i>	<i>00264377</i>	0A	-	-	9	22.8	7	6.0	6 to 8	13.5
<i>HROS 0a KP 6.4 PP</i>	<i>00267926</i>		1/4"	-				6.4		
<i>HROS 0a KP 8 PP</i>	<i>00266455</i>		5/16"	-				8.0		
<i>HROS 0b KP 8 PP</i>	<i>00267982</i>	0B	5/16"	-	11	27.2	7	8.0	8 to 12.7	18.5
<i>HROS 0b KP 9.5 PP</i>	<i>00267981</i>		3/8"	-				9.5		
<i>HROS 0b KP 12.7 PP</i>	<i>00267931</i>		1/2"	-				12.7		
<i>HROS 0c KP 10 PP</i>	<i>00267993</i>	0C	-	1/8"	15	33.5	6.7	10	10 to 16	23.6
<i>HROS 0c KP 12.7 PP</i>	<i>00267991</i>		1/2"	-				12.7		
<i>HROS 0c KP 16 PP</i>	<i>00264380</i>		5/8"	-				16		
<i>HROS 0d KP 14 PP</i>	<i>00268008</i>	0D	-	-	19	40	5.7	14	14 to 25.4	30.6
<i>HROS 0d KP 16 PP</i>	<i>00268004</i>		5/8"	3/8"				16		
<i>HROS 0d KP 19 PP</i>	<i>00267999</i>		3/4"	1/2"				19		
<i>HROS 0d KP 25.4 PP</i>	<i>00268217</i>		1"	-				25.4		
<i>HROS 1 KP 6 - 6 PP</i>	<i>00268231</i>	1	-	-	18	32	N/A	6-6	6 to 8	13.5
<i>HROS 1 KP 6.4 - 6.4 PP</i>	<i>00268230</i>		1/4"	-				6.4-6.4		
<i>HROS 1 KP 8 - 8 PP</i>	<i>00268229</i>		5/16"	-				8-8		
<i>HROS 2 KP 8 - 8 PP</i>	<i>00268236</i>	2	5/16"	-	22	40.5	N/A	8-8	8 to 12.7	18.5
<i>HROS 2 KP 9.5 - 9.5 PP</i>	<i>00268237</i>		3/8"	-				9.5-9.5		
<i>HROS 2 KP 12.7 - 12.7 PP</i>	<i>00268241</i>		1/2"	-				12.7-12.7		
<i>HROS 3 KP 10 - 10 PP</i>	<i>00268250</i>	3	-	1/8"	30	53.6	N/A	10-10	10 to 16	23.6
<i>HROS 3 KP 12.7 - 12.7 PP</i>	<i>00268253</i>		1/2"	-				12.7-12.7		
<i>HROS 3 KP 16 - 16 PP</i>	<i>00268257</i>		5/8"	-				16-16		
<i>HROS 4 KP 14 - 14 PP</i>	<i>00268270</i>	4	-	-	38	68.3	N/A	14-14	14 to 25.4	30.6
<i>HROS 4 KP 16 - 16 PP</i>	<i>00268272</i>		5/8"	3/8"				16-16		
<i>HROS 4 KP 19 - 19 PP</i>	<i>00268275</i>		3/4"	1/2"				19-19		
<i>HROS 4 KP 25.4 - 25.4 PP</i>	<i>00268280</i>		1"	-				25.4-25.4		

\*D1 and D2 may be different bore sizes. Dimensions listed are standard.

Dimensions are for general information only, all critical dimensions should be verified by requesting a certified print. Dimensions are in inches/(mm) and lbs/(kg)

*Model Codes containing selections listed in RED italics are non-standard items – Minimum quantities will apply – Contact HYDAC for information and availability*

*Not all combinations are available*