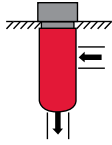


CF Series Manifold Cartridge Filters

3000 psi • up to 25 gpm

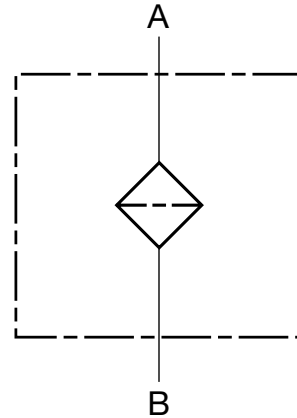


CFxx20



CFxx45

Hydraulic Symbol



Features

- Made of aluminum for light weight and low cost.
- Made to throw away when fully clogged.
- Low price - market competitive

Technical Details

Port Connections	CF20	SAE-16 Modified Cavity
	CF45	SAE-20 Cavity (VC20-S3)
Direction of Flow	Outside to Inside flow	
Materials of Construction	Aluminum	
Flow Capacity		
CF20	5 GPM (15 micron - fiberglass media) 2.5 GPM recommended design flow max. - for high efficiency media	
CF45	12 GPM (25, 149 micron - wire screen media) 12 GPM (15 micron - fiberglass media) 6 GPM recommended design flow max. - for high efficiency media 25 GPM (25, 149 micron - wire screen media)	
Housing Pressure Rating		
Max. Operating Pressure:	3000 psi (207 bar)	
Proof Pressure:	4500 psi (310 bar)	
Element Performance Rating		
MM, W	290 psid (20 bar)	
Fluid Temperature Range	-22° to 250°F (-30° to 121°C)	
Fluid Compatibility	Compatible with all petroleum oils and synthetic fluids rated for use with Fluoro-Rubber seals. Contact HYDAC for information on special housing and element constructions available for use with water glycols, oil/water emulsions, and HWBF.	

Applications



Agricultural



Construction



Industrial

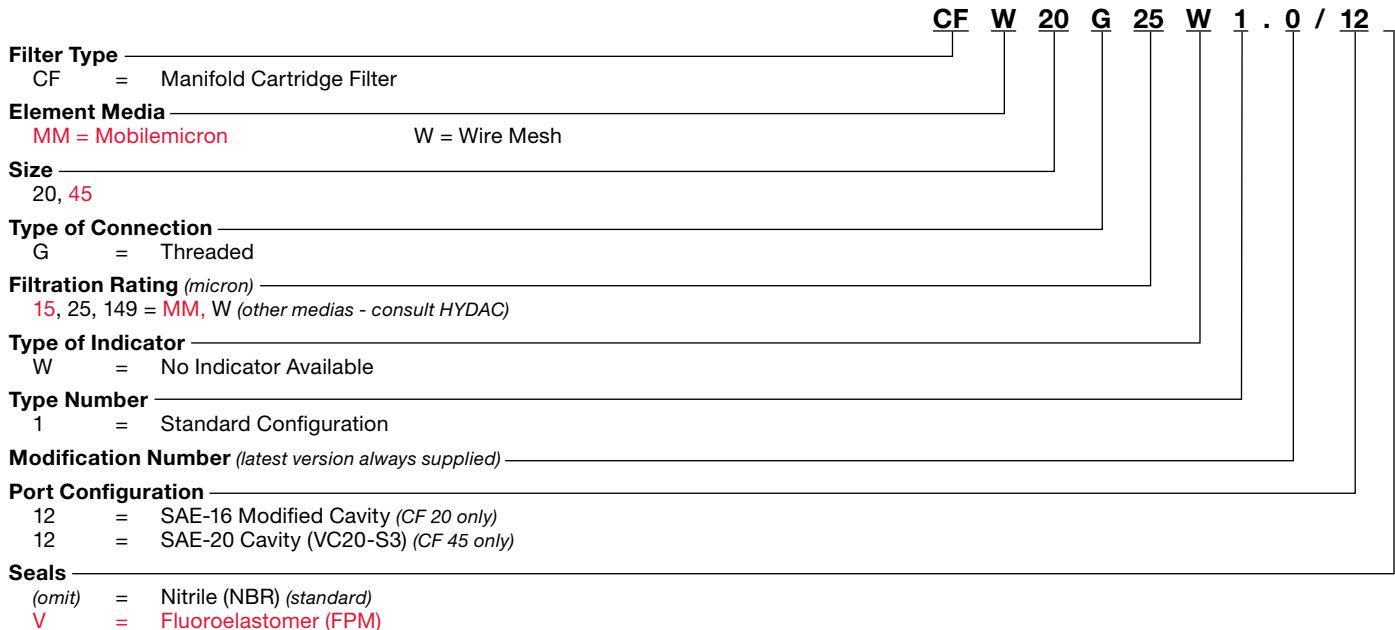


Commercial
Municipal



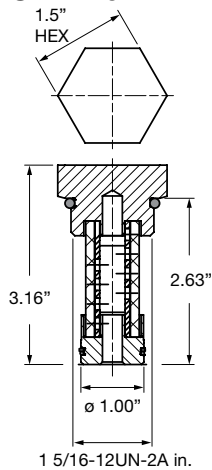
Railways

Model Code

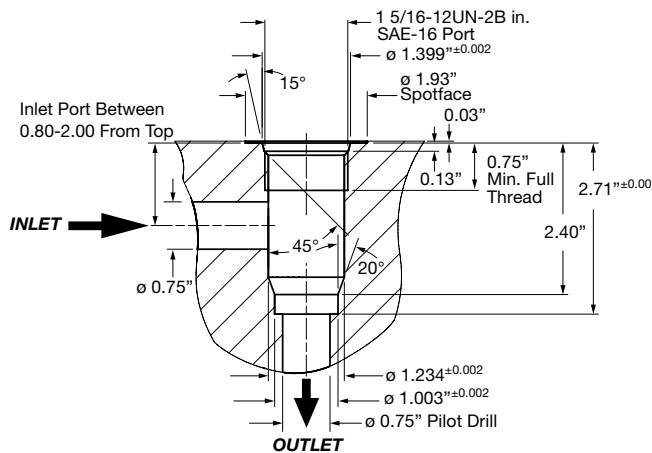


Model Codes Containing RED are non-stock items — Minimum quantities may apply – Contact HYDAC for information and availability

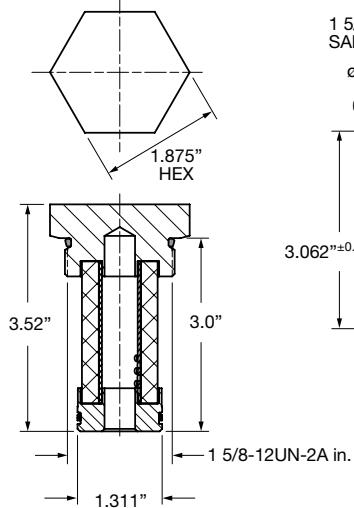
Dimensions CFxx20



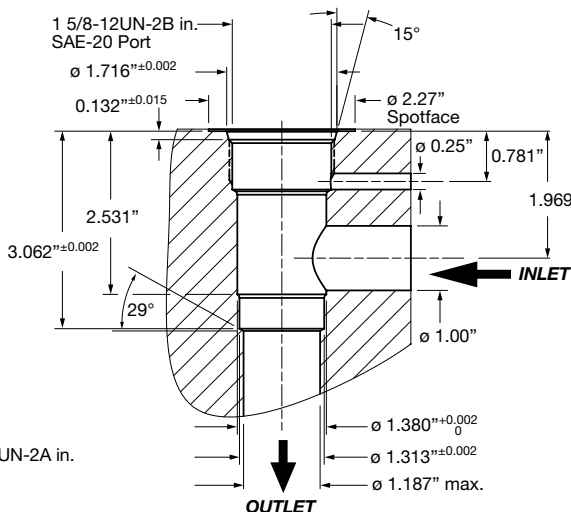
Cavity



CFxx45



Cavity



Flow Curves

