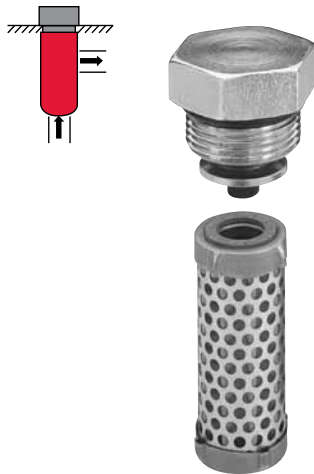
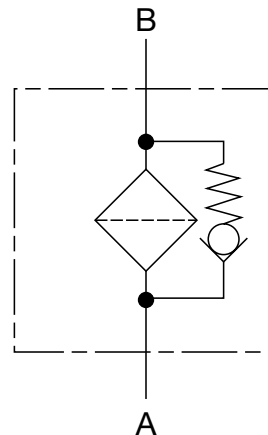


## CP-SAE Series Circuit Protector Manifold Cartridge Filters

6000 psi • up to 30 gpm



### Hydraulic Symbol



### Features

- Simple Cost Effective way to provide component protection with minimal space required eliminating design restraints.
- Fits into a standard manifold SAE O-ring Port.
- CP Circuit Protector Filters provide back-up protection when upstream pressure filters go into by-pass or if element damage occurs.
- CP-SAE provides operations protection through supply of a by-pass to assure flow to critical components if filter becomes clogged.
- Increased range of product use through three (3) different sizes available, 15 at 4 gpm, 40 at 12 gpm, and size 120 at 30 gpm.
- Suitable for petroleum based fluids.

### Applications



Agricultural



Automotive



Construction

### Technical Details

<b>Mounting Method</b>	
CP-SAE-15	SAE-10 Port
CP-SAE-40	SAE-16 Port
CP-SAE-120	SAE-24 Port
<b>Flow Direction</b>	Inlet: Bottom      Outlet: Side
<b>Construction Materials</b>	
CP-SAE-15	Carbon steel
CP-SAE-40	Carbon steel
CP-SAE-120	Stainless steel
<b>Flow Capacity</b>	
CP-SAE-15	4 gpm (15 lpm)
CP-SAE-40	12 gpm (45 lpm)
CP-SAE-120	30 gpm (113 lpm)
<b>Housing Pressure Rating</b>	
Max. Operating Pressure	6000 psi (420 bar)
Proof Pressure	9000 psi (630 bar)
Fatigue Pressure	Contact HYDAC Office
Burst Pressure	Contact HYDAC Office
<b>Element Collapse Pressure Rating</b>	
W	100 psid (6.9 bar)
<b>Fluid Temperature Range</b>	-22° to 250°F (-30° to 121°C)
<b>Fluid Compatibility</b>	
Compatible with all petroleum oils rated for use with Nitrile seals.	
<b>Bypass Valve Cracking Pressure</b>	
ΔP = 50 psid (3.4 bar) +10% (standard)	

### Replacement Elements

Part Number	Description	Flow Rate
02069397	0015 D 010 W	0015 - 4 gpm
02069398	0040 D 010 W	0040 - 12 gpm
02069399	0120 D 010 W	0120 - 30 gpm

## Model Code

**CP-SAE W 15 G 10 W 1 . 0 / 12 B3.5**

**Filter Type** \_\_\_\_\_  
 CP = Circuit Protector (SAE O-ring Port)

**Element Media** \_\_\_\_\_  
 W = Wire Mesh

**Size** \_\_\_\_\_  
 15 = 4 gpm      40 = 12 gpm      120 = 30 gpm

**Inline Port** \_\_\_\_\_  
 G = Male Threaded

**Filtration Rating (micron)** \_\_\_\_\_  
 10 = 10

**By-pass Indicator** \_\_\_\_\_  
 W = No indicator Port

**Type Number** \_\_\_\_\_  
 1 = Standard Configuration

**Modification Number** \_\_\_\_\_

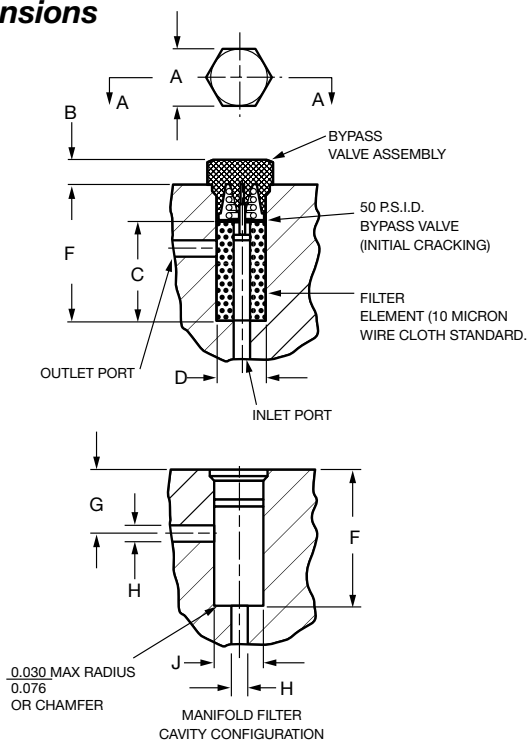
**Port Configuration** \_\_\_\_\_  
 12

**By-pass Valve** \_\_\_\_\_  
 B3.5 = 50 psi

**Seals** \_\_\_\_\_  
 (omit) = Nitrile (NBR) (standard)  
 V = Fluoroelastomer (FPM)

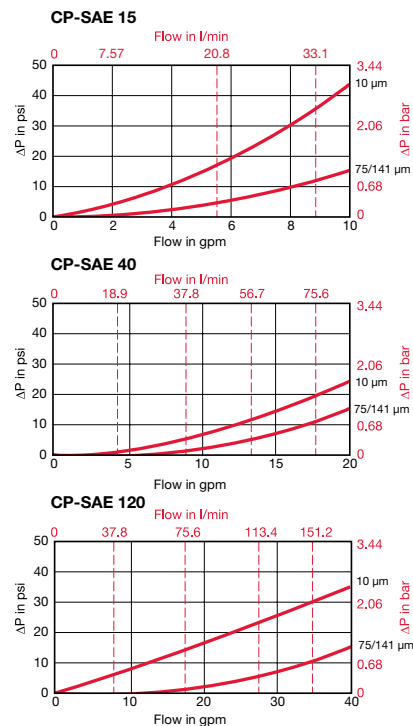
*Model Codes Containing RED are non-stock items — Minimum quantities may apply – Contact HYDAC for information and availability*

## Dimensions



## Flow Curves

Based on testing conducted with 150 SUS fluid at 105°F.



Model	A	B	C	D	E SAE O-Ring Port	F	G	H	J	Torque	
										Alu.	Steel
CP-SAE 15	1.00/25.4	0.41/10.4	1.75/44.5	0.74/18.8	-10 (7/8-14)	2.41/61.2	1.12/28.4 min 1.87/47.5 max	0.266/6.8	0.781/19.8 min 0.814/20.7 max	65 ft-lb	85 ft-lb
CP-SAE 40	1.5/38.1	0.5/12.7	2.50/63.5	1.00/25.4	-16 (1 5/16-12)	3.34/84.8	1.49/37.8 min 2.53/64.3 max	0.531/13.5	1.140/29.0 min 1.1875/30.1 max	150 ft-lb	200 ft-lb
CP-SAE 120	2.13/54.1	0.65/16.5	4.00/101.6	1.50/38.1	-24 (1 7/8-12)	5.01/127.3	1.92/48.8 min 3.81/96.8 max	0.875/22.2	1.750/44.5 min 1.803/45.8 max	230 ft-lb	305 ft-lb