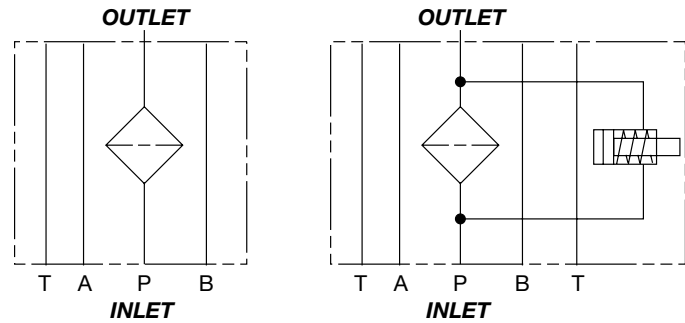


## DFZ Series Modular Stacking Filters

4500 psi • up to 10 gpm



### Hydraulic Symbol



### Features

- A visual (pop-up), electrical, electrical/visual (lamp) differential type clogging indicator can be installed.
- The DFZ filter can be ordered with the bowl on the left or the right side for easy element changeout.
- The DFZ filter is available in two mounting patterns to fit different hydraulic manifolds:  
ANSI/B93.7M-D03 / Cetop R35 (was B93.7-D01) DF 30 Z  
ANSI/B93.7M-D05 / Cetop R35 (was V93.7-D02)\* DF 60 Z or DF 110 Z

\*includes fifth port for optional tank connection

### Technical Details

<b>Mounting Method</b>	4 mounting holes ( <i>manifold mount</i> )	
<b>Port Connection</b>	30 ANSI D03/A6 DIN 24340 / Cetop R35 60/110 ANSI D05/A10 DIN 24340 / Cetop R35	
<b>Flow Direction</b>	Inlet: Side	Outlet: Side
<b>Construction Materials</b>	Head, Bowl Steel	
<b>Flow Capacity</b>	30 8 gpm (30 lpm) 60/110 16 gpm (60 lpm)	
<b>Housing Pressure Rating</b>	Max. Operating Pressure 4500 psi (315 bar) Proof Pressure 6750 psi (472 bar) Fatigue Pressure 30 4500 psi (315 bar) @ 250,000 cycles 60/110 4500 psi (315 bar) @ 1 million cycles	
	Burst Pressure > 18,270 psi (1260 bar)	
<b>Element Collapse Pressure Rating</b>	BH/HC, V 3045 psid (210 bar)	
<b>Fluid Temperature Range</b>	-22° to 250°F (-30° to 121°C)	
<b>Fluid Compatibility</b>	Compatible with all petroleum oils and synthetic fluids rated for use with Fluoroelastomer or Ethylene Propylene seals. Contact HYDAC for information on special housing and element constructions available for use with water glycols, oil/water emulsions, and HWBF.	
<b>Indicator Trip Pressure</b>	ΔP = 116 psid (8 bar) -10% (standard)	

### Applications



Agricultural



Automotive



Construction



Industrial



Power Generation

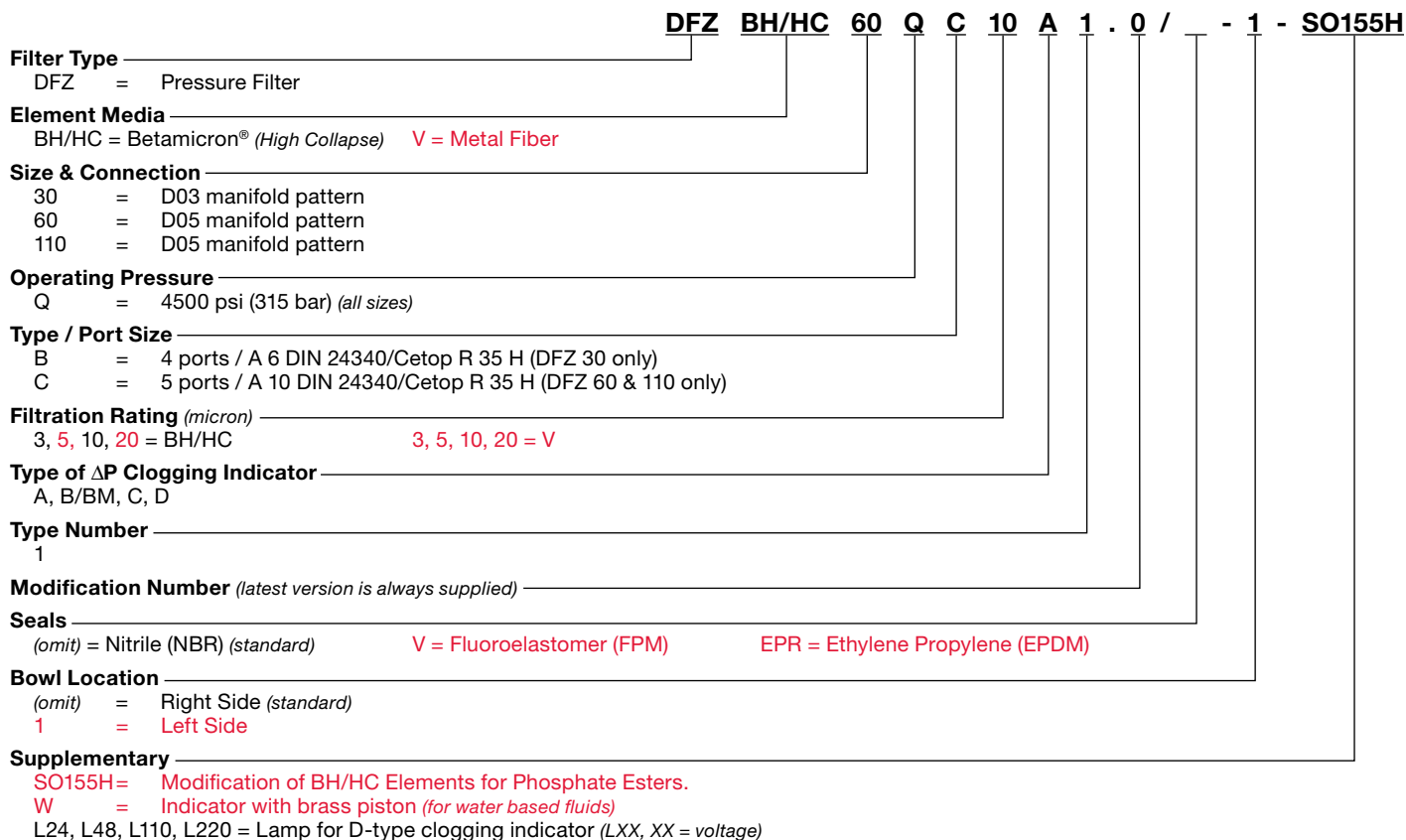


Railways

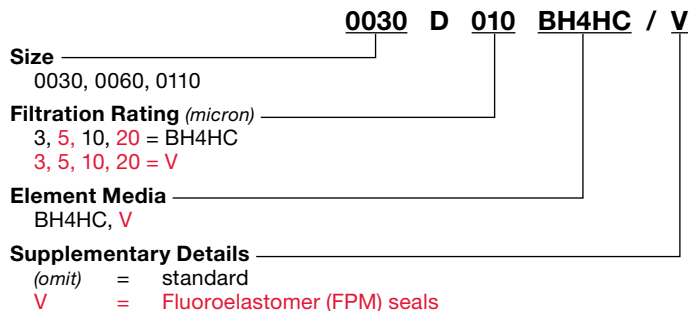


Steel / Heavy Industry

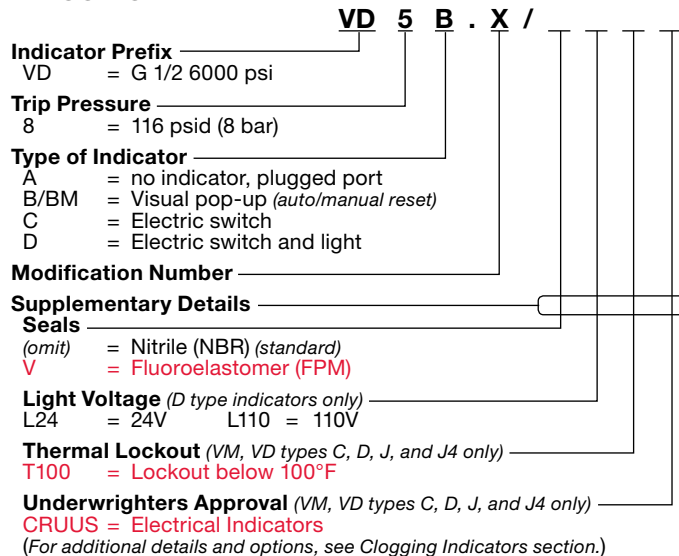
## Model Code



## Replacement Element Model Code



## Clogging Indicator Model Code

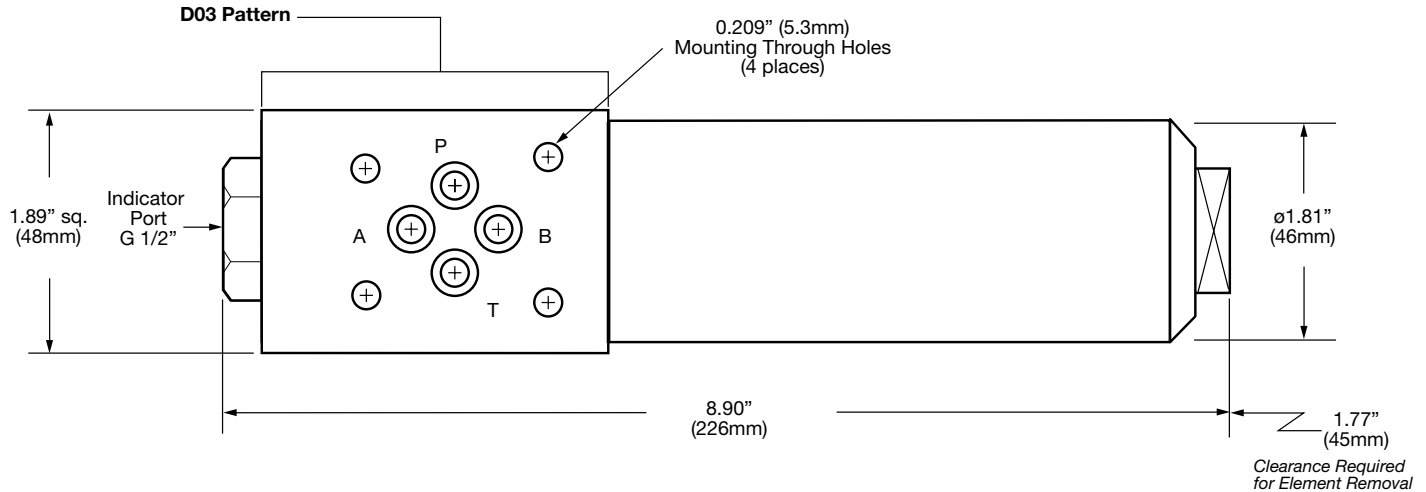


Model Codes Containing RED are non-stock items — Minimum quantities may apply — Contact HYDAC for information and availability

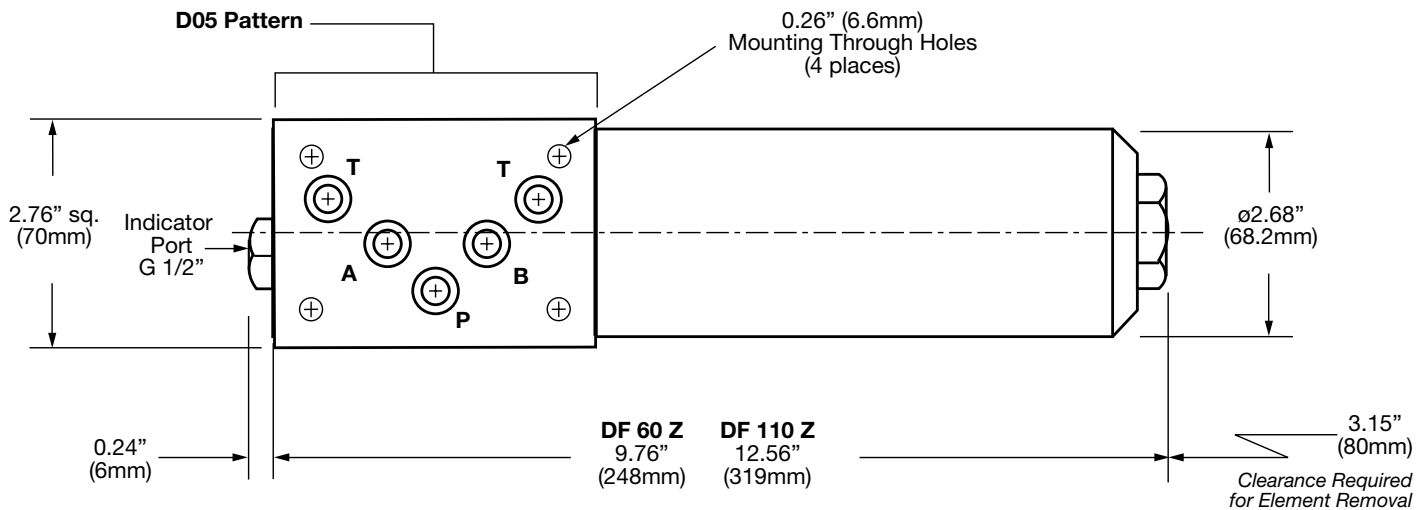
# HYDAC | High Pressure Filters

## Dimensions

### DF 30 Z (Right Hand Version Shown) - (standard)



### DF 60 / 110 Z (Right Hand Version Shown) - (standard)



Size	60	110	160	240	280	330	660	1320
Weight (lbs.)	10.6	12.3	18.1	21.2	31.0	48.1	63.4	106.5

Dimensions shown are for general information and overall envelope size only. Weights listed are without element. For complete dimensions please contact HYDAC to request a certified print.

## Sizing Information

Total pressure loss through the filter is as follows:

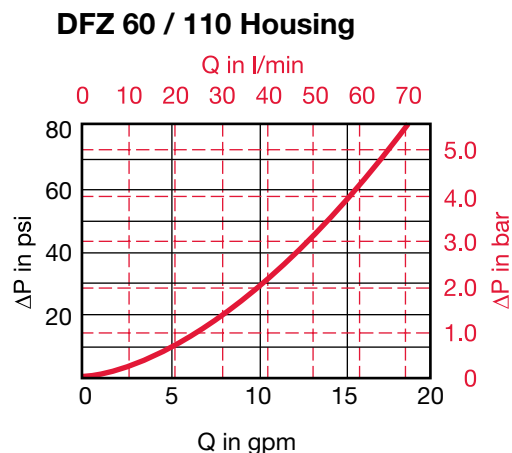
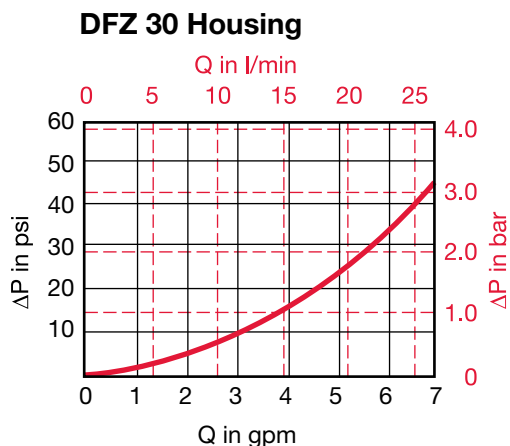
$$\text{Assembly } \Delta P = \text{Housing } \Delta P + \text{Element } \Delta P$$

### Housing Curve:

Pressure loss through housing is as follows:

$$\text{Housing } \Delta P = \text{Housing Curve } \Delta P \times \frac{\text{Actual Specific Gravity}}{0.86}$$

Adjustments must be made for viscosity & specific gravity of the fluid to be used! (see sizing section on page 19)



## Element K Factors

$$\Delta P \text{ Elements} = \text{Elements (K) Flow Factor} \times \text{Flow Rate (gpm)} \times \frac{\text{Actual Viscosity (SUS)}}{141 \text{ SUS}} \times \frac{\text{Actual Specific Gravity}}{0.86}$$

(From Tables Below)

Size	...D...BH4HC (Betamicon® High Collapse)			
	3 μm	5 μm	10 μm	20 μm
0030	5.000	2.780	1.989	1.042
0060	3.210	1.785	0.993	0.669
0110	1.394	0.819	0.488	0.307

Size	...D...V Elements			
	3 μm	5 μm	10 μm	20 μm
0030	1.011	0.740	0.411	0.200
0060	0.877	0.511	0.296	0.183
0110	0.452	0.304	0.182	0.118

All Element K Factors in psi / gpm.