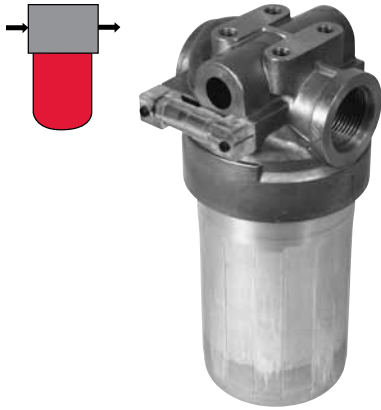


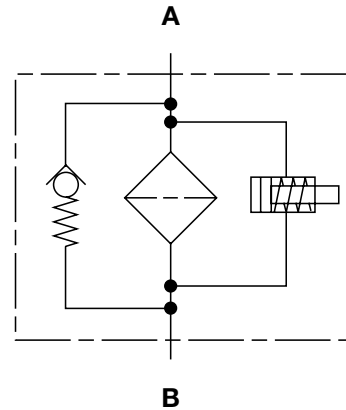
MFX Series

Inline Filters

725 psi • up to 35 gpm



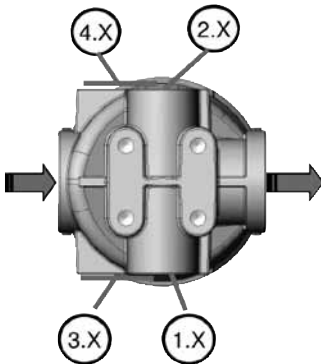
Hydraulic Symbol



Features

- Eco-friendly, cost-effective alternative to spin-on filters
- Integrated retrofit protection
- Longer service life of the filter bowl because of fatigue resistant up to 725 psi
- High level operating safety. Bowl seal and bypass valve are integrated in the filter element and therefore renewed at every element change.
- “Missing Element Protection”
- High diversity of clogging indicators
- Various connection types (SAE-12, G 3/4, SAE-16, G 1, M33x2)

Clogging Indicator Assignment



Applications



Agricultural



Automotive



Construction



Commercial
Municipal

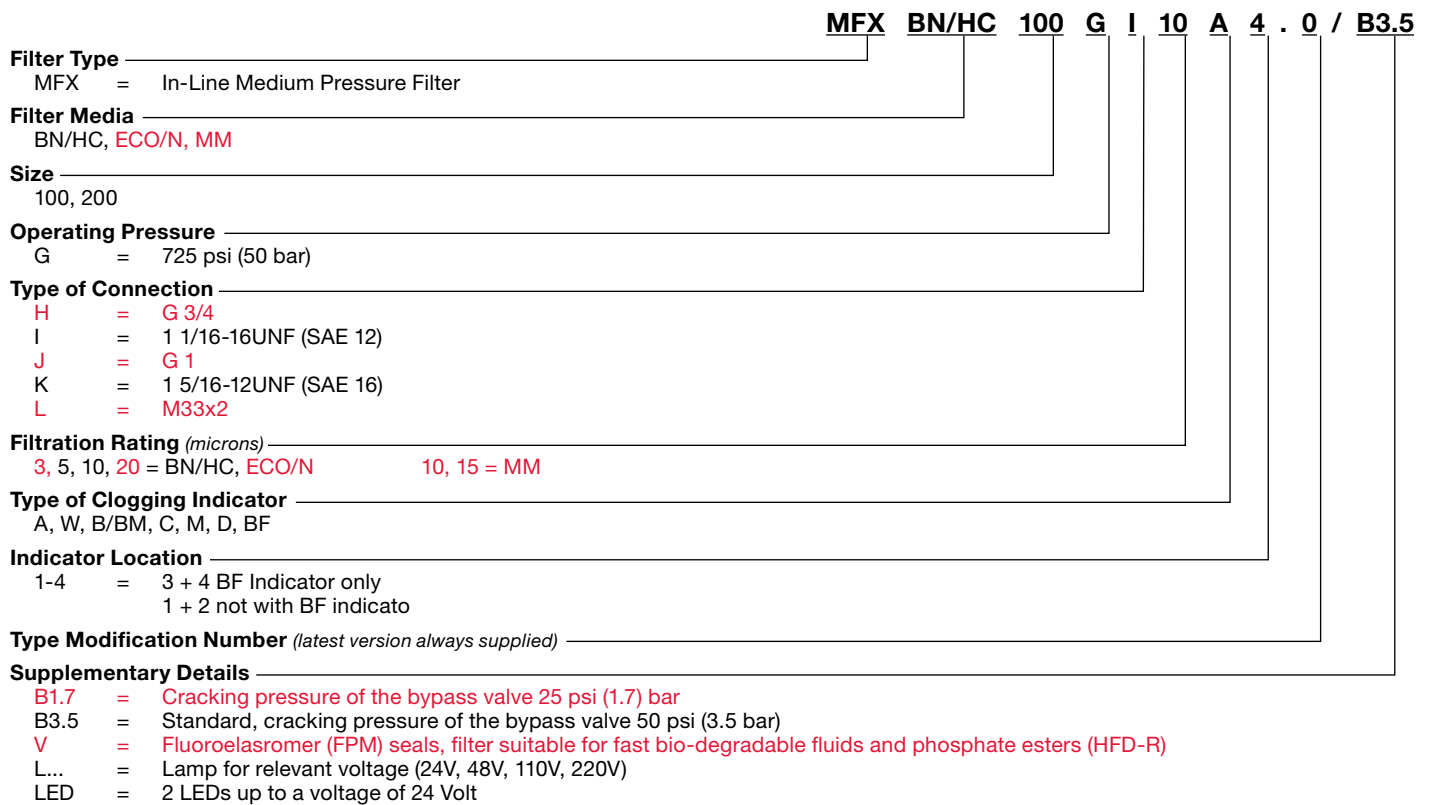


Railways

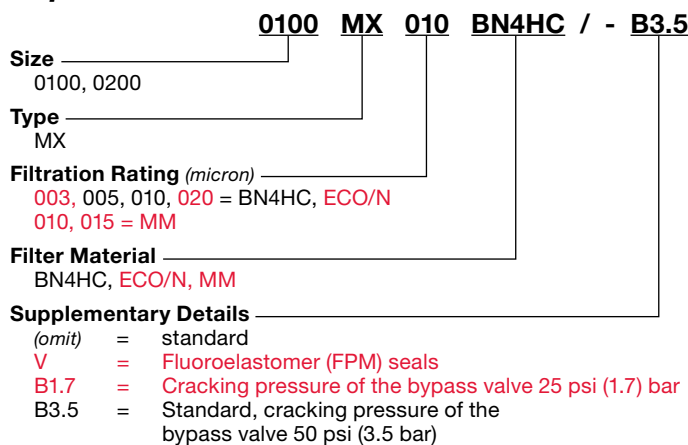
Technical Details

Mounting Method	4 Mounting holes (3/8-16UNC)
Port Connection	SAE-12, G 3/4 SAE-16, G 1, M33x2
Flow Direction	Inlet: Side Outlet: Side (opposite each other)
Construction Materials	Head: Die Cast Aluminum Bowl: Extruded Aluminum
Flow Capacity	100: 26 gpm (100lpm) 200: 35 gpm (130 lpm)
Housing Pressure Rating	Max. Operating Pressure: 725 psi (50 bar) Proof Pressure: 870 psi (60 bar) Fatigue Pressure: 725 psi (50 bar) @ 1 million cycles Burst Pressure: 2600 psi (183 bar)
Element Collapse Pressure Rating	BN/HC: 290 psid (20 bar) ECO/N, MM: 145 psid (10 bar)
Fluid Temperature Range	-22° to 250°F (-30° to 121°C)
Fluid Compatibility	Compatible with all petroleum oils and synthetic fluids rated for use with Fluoro-Rubber or Ethylene Propylene seals. Contact HYDAC for information on special housing and element constructions available for use with water glycols, oil/water emulsions, and HWBF.
Indicator Trip Pressure	$\Delta P = 35 \text{ psi (2.4 bar) } -10\%$
Bypass Valve Cracking Pressure	$\Delta P = 50 \text{ psid (35 bar) } +10\%$

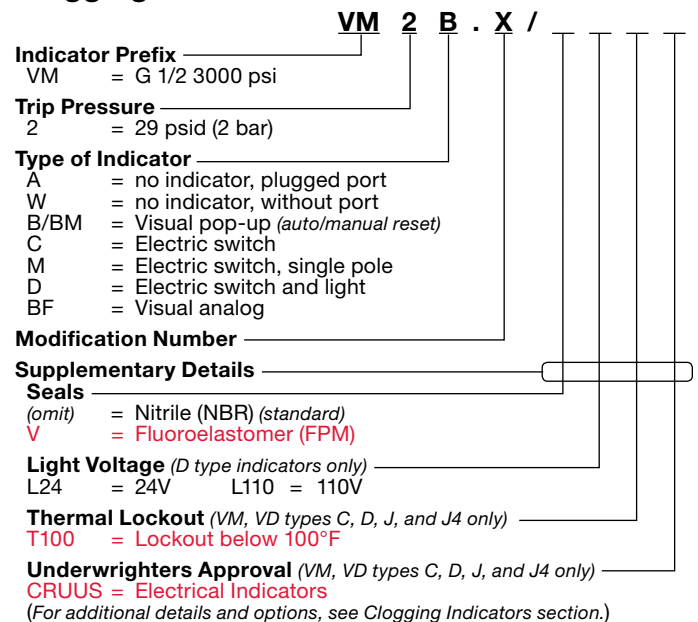
Model Code



Replacement Element Model Code

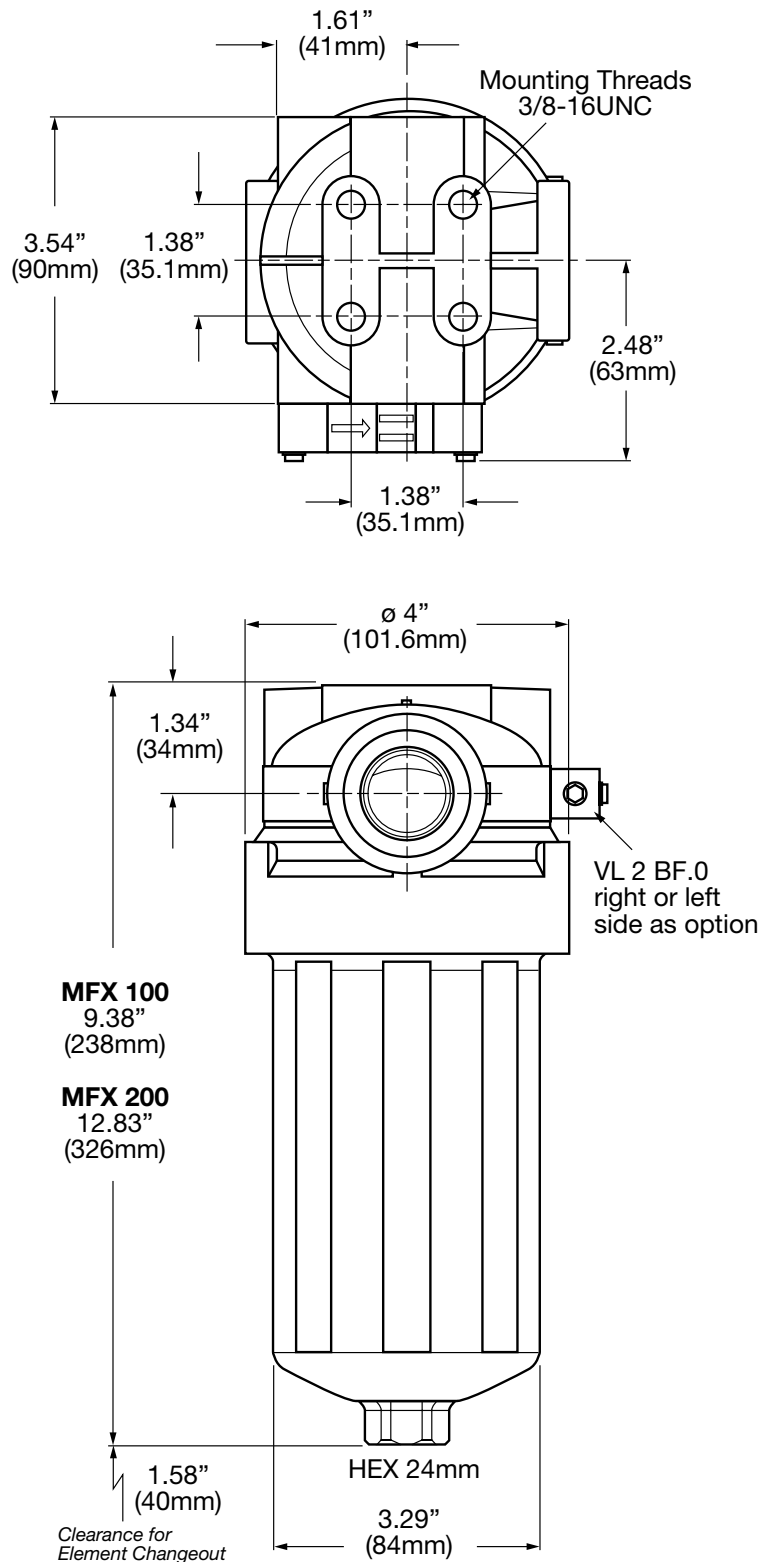


Clogging Indicator Model Code



Model Codes Containing RED are non-stock items — Minimum quantities may apply — Contact HYDAC for information and availability

MFX Series Dimensions



Size	100	200
Weight (lbs.)	3.2	3.9

Dimensions shown are for general information and overall envelope size only. Weights listed are without element. For complete dimensions please contact HYDAC to request a certified print.

Sizing Information

Total pressure loss through the filter is as follows:

$$\text{Assembly } \Delta P = \text{Housing } \Delta P + \text{Element } \Delta P$$

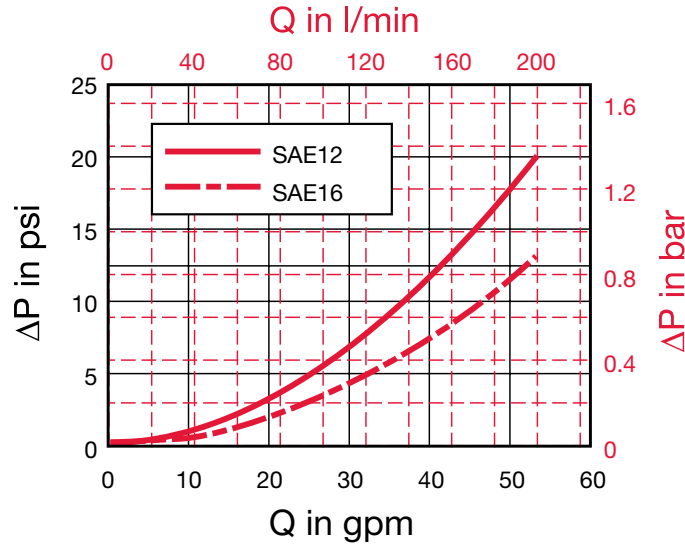
Housing Curve:

Pressure loss through housing is as follows:

$$\text{Housing } \Delta P = \text{Housing Curve } \Delta P \times \frac{\text{Actual Specific Gravity}}{0.86}$$

Adjustments must be made for viscosity & specific gravity of the fluid to be used! (see sizing section on page 19)

MFX 100/200 Housing



Element K Factors

$$\Delta P \text{ Elements} = \text{Elements (K) Flow Factor} \times \text{Flow Rate (gpm)} \times \frac{\text{Actual Viscosity (SUS)} \times \text{Actual Specific Gravity}}{141 \text{ SUS} \times 0.86}$$

(From Tables Below)

Size	...MX...BN4HC (Betamicon® Low Collapse)		
	5 μm	10 μm	20 μm
100	0.4941	0.2196	0.1867
200	0.3459	0.1482	0.1098

Size	...MX...ECO/N		
	5 μm	10 μm	20 μm
100	0.5490	0.3569	0.2635
200	0.3239	0.2086	0.1537

Size	...MX...MM	
	10 μm	15 μm
100	0.1482	0.1208
200	0.0878	0.0714

All Element K Factors in psi / gpm.